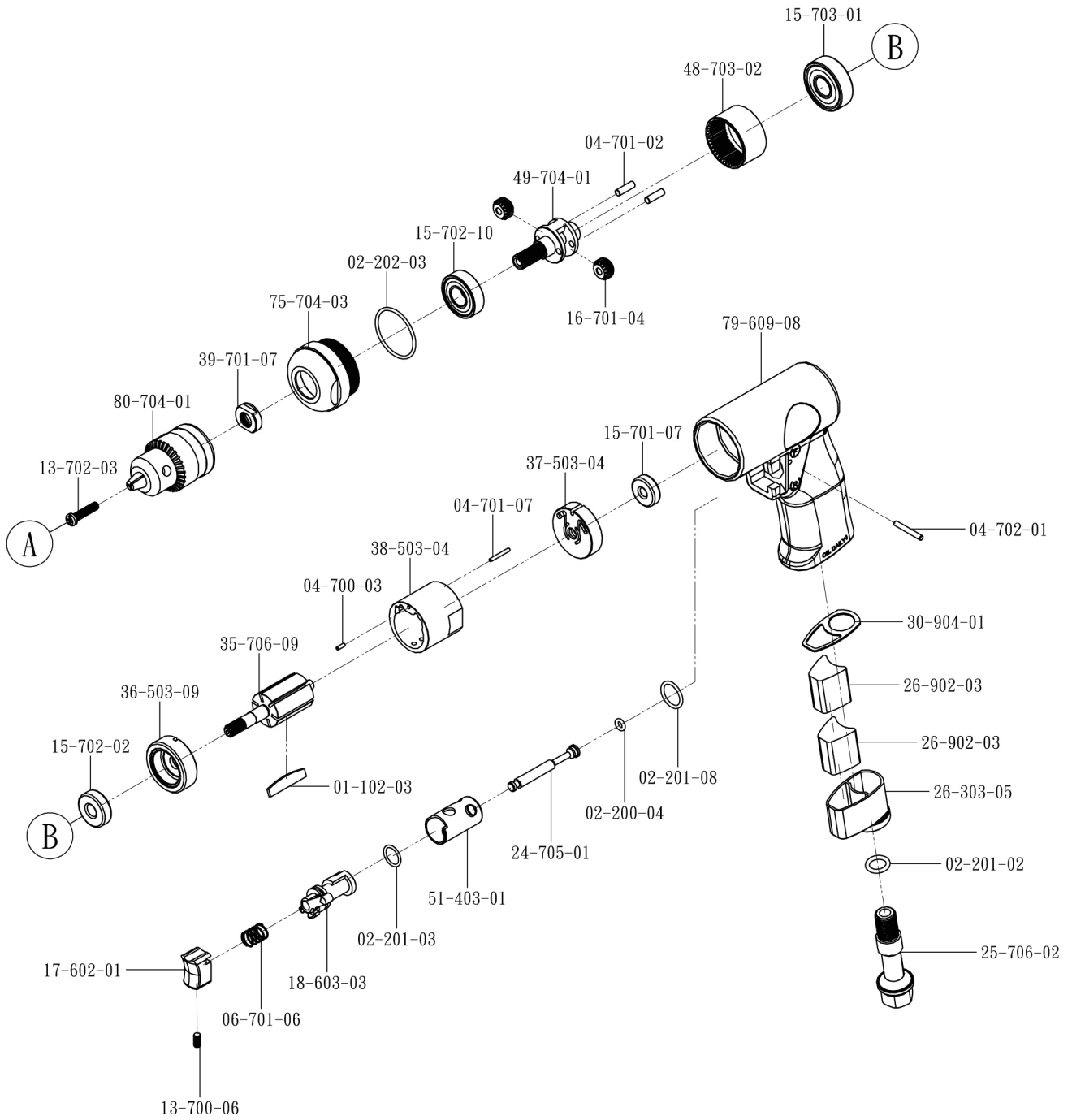


GLD-A101(3/8") Air Drill



Part NO.	Description	Q' ty
01-102-03	ROTOR BLADE	6
02-200-04	O-RING (P4x1.9)	1
02-201-02	O-RING (P10x2.4)	1
02-201-03	O-RING (P11x1.5)	1
02-201-08	O-RING (P14x1.9)	1
02-202-03	O-RING (P29.87x1.8)	1
04-700-03	PIN (\$ 2x6)	1
04-701-02	PIN (\$ 4x13)	2
04-701-07	PIN (\$ 2x16)	1
04-702-01	PIN (\$ 3x22)	1
06-701-06	SPRING	1
13-700-06	SCREW	1

Part NO.	Description	Q' ty
13-702-03	SCREW	1
15-701-07	BALL BEARING (626)	1
15-702-02	BALL BEARING (608)	1
15-702-10	BALL BEARING (6001-2Z)	1
15-703-01	BALL BEARING (6201-2Z)	1
16-701-04	GEAR	2
17-602-01	SWITCH LEVER	1
18-603-03	REVERSE VALVE	1
24-705-01	VALVE ROD	1
25-706-02	AIR INLET	1
26-902-03	MUFFLER	2

Part NO.	Description	Q' ty
30-904-01	PACKING	1
35-706-09	ROTOR	1
36-503-09	FRONT PLATE	1
37-503-04	REAR PLATE	1
38-503-04	CYLINDER	1
39-701-07	BOLT	1
48-703-02	GEAR RING	1
49-704-01	GEAR SEAT	1
51-403-01	BUSHING	1
75-704-03	FRONT CAP	1
79-609-08	HANDLE	1
80-704-01	CHUCK	1

Model	Chuck Size (mm)	Free Speed (rpm)	Stall Torque (Nm)	Overall Length (mm)	Weight (kg)	Air Inlet Size	Air Pressure (psi)
101	9.5	2500	2.1	185	1.07	1/4"	90